

SPECIFICATION

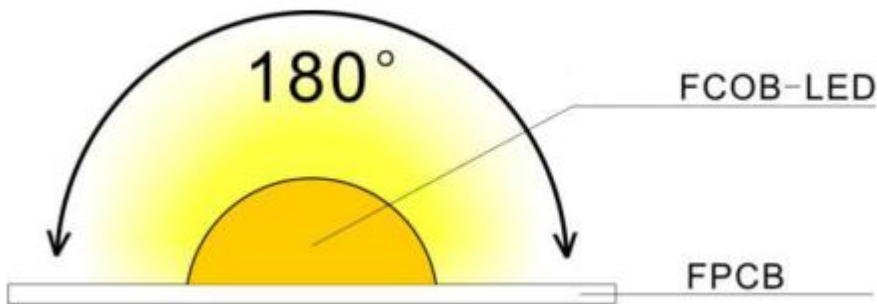
LMCOB-WN378-24V-8MM



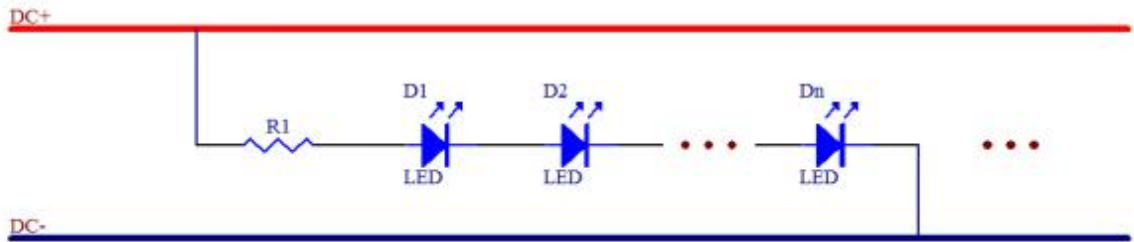
Technical Parameters

Mode	LED Q'ty/M	Color temperature		CRI(Ra)	Voltage (V DC)	Electric current (A)	Power $\pm 10\%$ (W/5m) Actual	Lm/5M $\pm 10\%$	Cutting Unit(mm)	FPC Width
LMCOB-WN378-24V-8MM	504	White	6000K	90+	24	1.65A/5M	40W/5M	375lm	55.56MM	8mm
		Natural Wite	4000K							
		Warm white	3000K							
		Warm white	2700K							

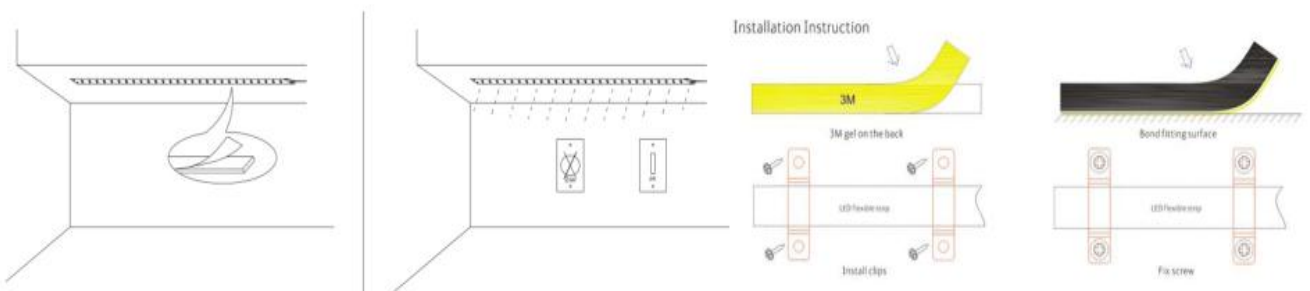
Dimension(mm/inch)



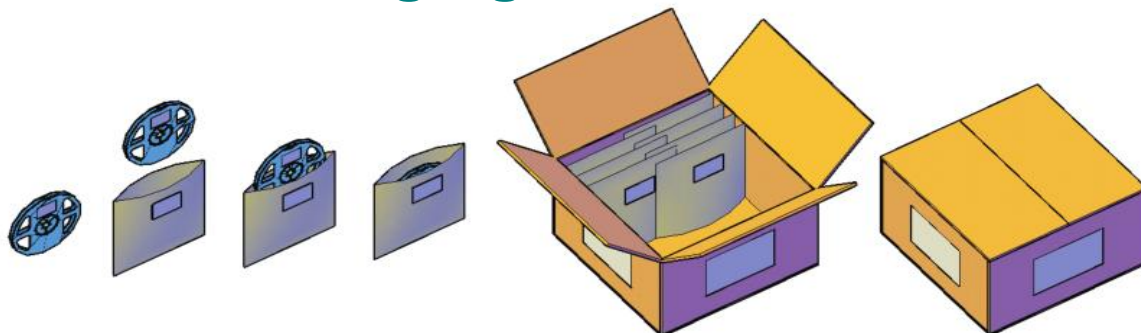
Linking Operation



Installation



Product Packaging



Safety Information

- The strip itself and all its components may not be mechanically stressed.
- Assembly must not damage or destroy conducting paths on the circuit board.
- Installation of LED ribbon (with power supplies) needs to be made with regard to all applicable electrical and safety standards. Only qualified personnel should be allowed to perform installations.
- Correct electrical polarity needs to be observed. Wrong polarity may destroy the strip.
- Parallel connection is highly recommended as safe electrical operation mode.
- Serial connection is not recommended. Unbalanced voltage drop can cause hazardous overload and damage the strip.
- Please ensure that the power supply is of adapters power to operate the total load.
- When mounting on metallic or otherwise conductive surfaces, there needs to be an electrical isolation points between strip and the mounting surface.
- Pay attention to standard ESD precautions when installing the strip.
- Damaged by corrosion will not be honored as a materials defect claim. It is the user's responsibility to provide suitable protection against corrosive agents such as moisture and condensation and other harmful elements.